



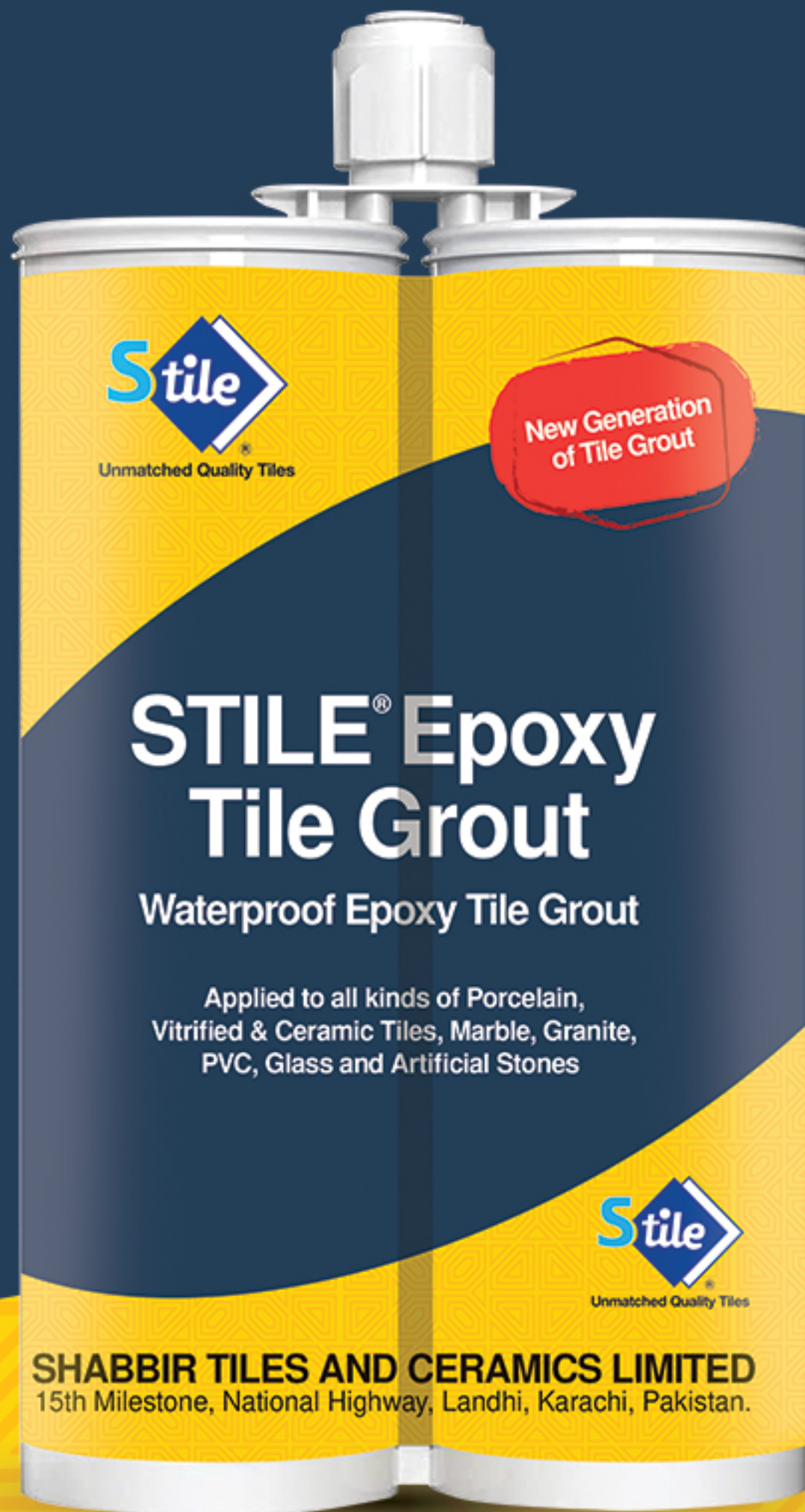
Unmatched Quality Tiles

New Generation
of Tile Grout

STILE[®] Epoxy Tile Grout

Waterproof Epoxy Tile Grout

Applied to all kinds of Porcelain,
Vitrified & Ceramic Tiles, Marble, Granite,
PVC, Glass and Artificial Stones



SHABBIR TILES AND CERAMICS LIMITED

15th Milestone, National Highway, Landhi, Karachi, Pakistan.

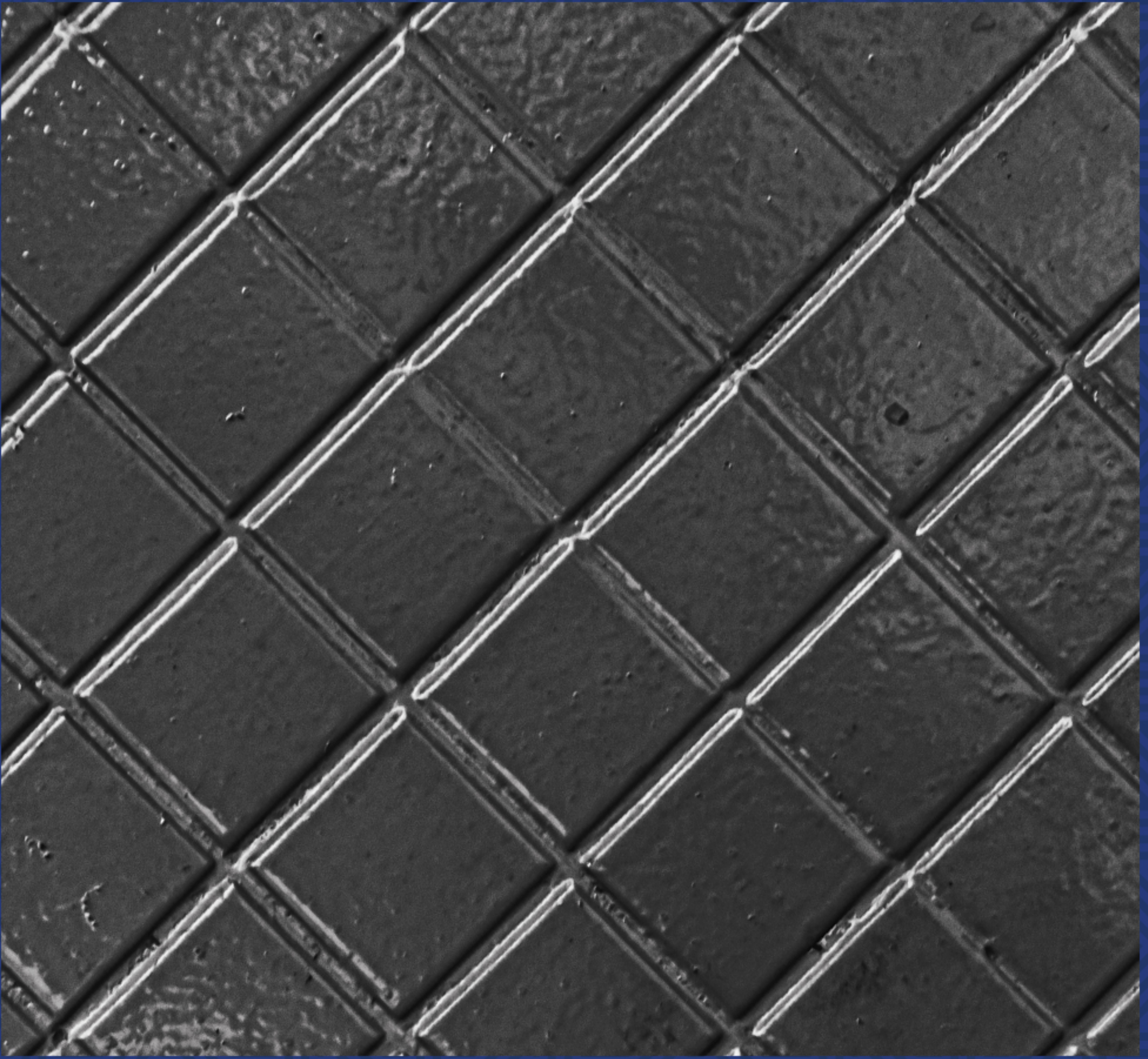
© +92-311-11STILE [78453] 🌐 www.stile.com.pk ✉ info@stile.com.pk

📷 [/stiletiles ceramic](https://www.instagram.com/stiletiles ceramic)

📘 [/ShabbirStile](https://www.facebook.com/ShabbirStile)

🖥 emporium-visualiser.stile.com.pk

Copyright © 2026 Shabbir Tiles and Ceramics Limited



INTRODUCTION:

STILE® Epoxy Tile Grout is a premium two-component grout that offers exceptional durability, chemical resistance, and long-lasting color stability. With its smooth, stain-free, and waterproof finish, it ensures easy maintenance & lasting elegance, making it ideal for aesthetic, decorative, and high-performance tile joint finishing in residential, commercial, & industrial spaces.

KEY FEATURES & BENEFITS:

- Exceptional color stability.
- Hydrophobic and stain-free for lasting surface aesthetics.
- Excellent weather resistance (-30°C to 40°C).
- Anti-fungal and anti-mildew.
- High tensile strength, abrasion-resistant, and durable.

COLORS:

Available Colors:



Noble White



Almond



Bright Gold



Smoke Grey



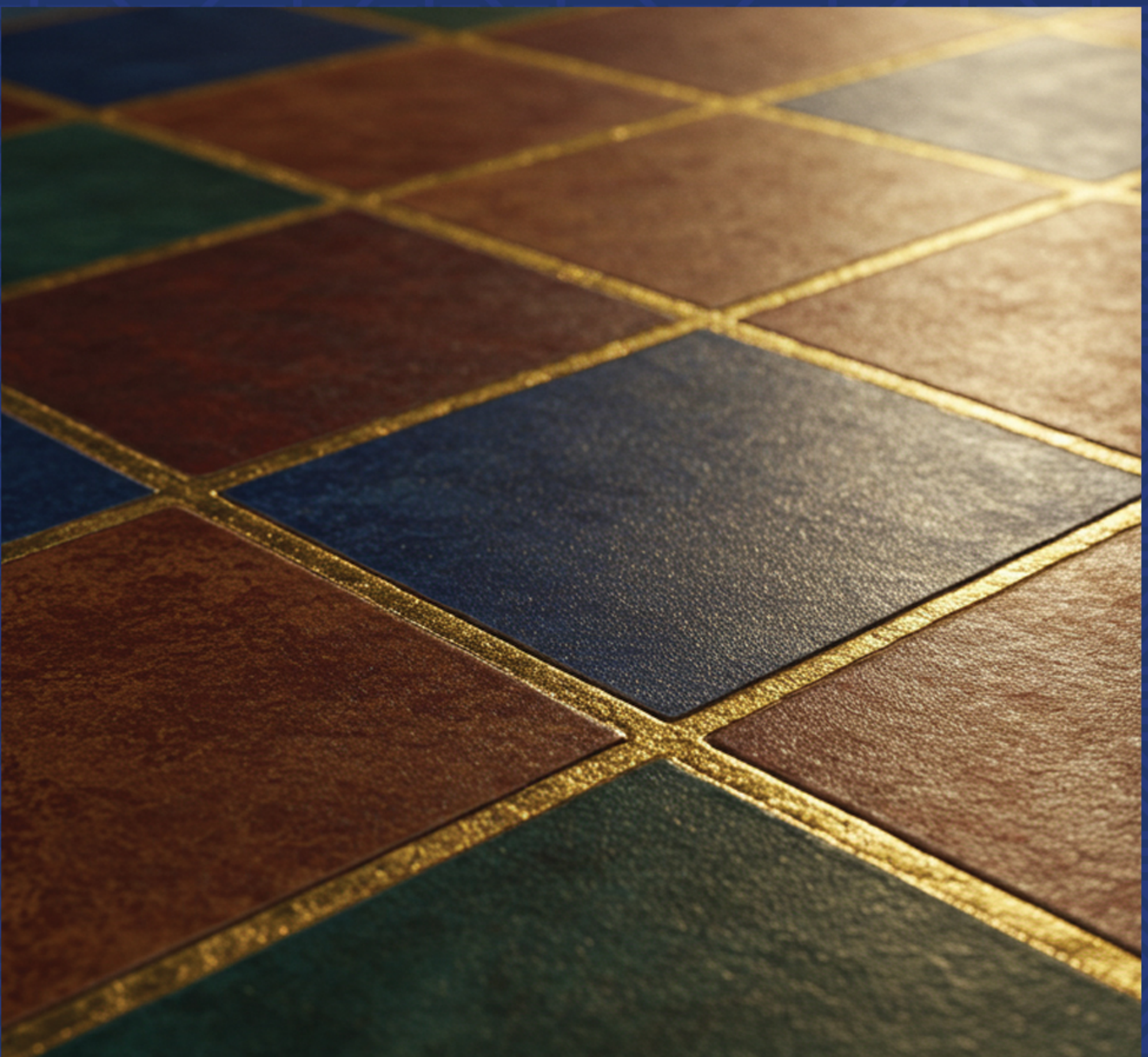
Shiny Silver



Noble Black

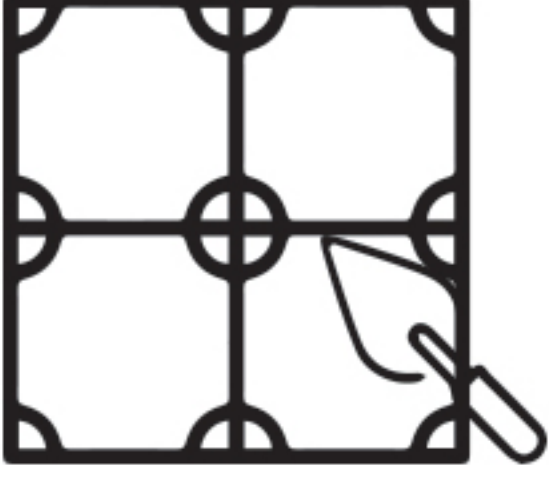
RECOMMENDED APPLICATIONS:

- Residential and commercial kitchens.
- Decorative Walls.
- Bathrooms and wet areas.
- Swimming pools.
- Hospitals and hygienic environments.
- Malls and commercial buildings.



APPLICATION METHOD:

Step 1



Clean the joint / gap with a sharp edged knife / spatula

جووائنٹ کو کسی باریک اوزار یا کھرپی سے اچھی طرح صاف کریں

Step 2



Tighten up mixer nozzle at the top of cartridge

مخصوص مکسر نوزل کو کارٹریج کے اوپر اچھی طرح نصب کریں

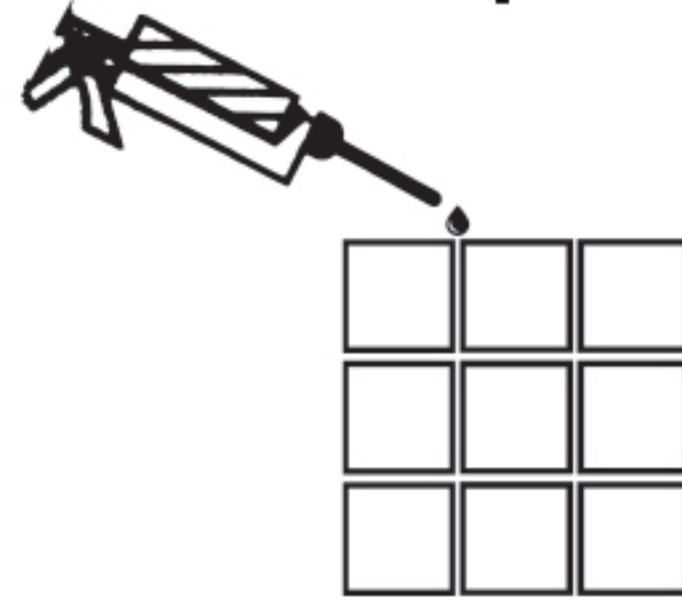
Step 3



Fix cartridge in dual cartridge gun and waste some material

اب کارٹریج کو گن میں نصب کریں اور کچھ مواد ضائع کریں

Step 4



Apply STILE® Epoxy Tile Grout on the joint

STILE® Epoxy Tile Grout کو جووائنٹ میں اچھی طرح بھریں

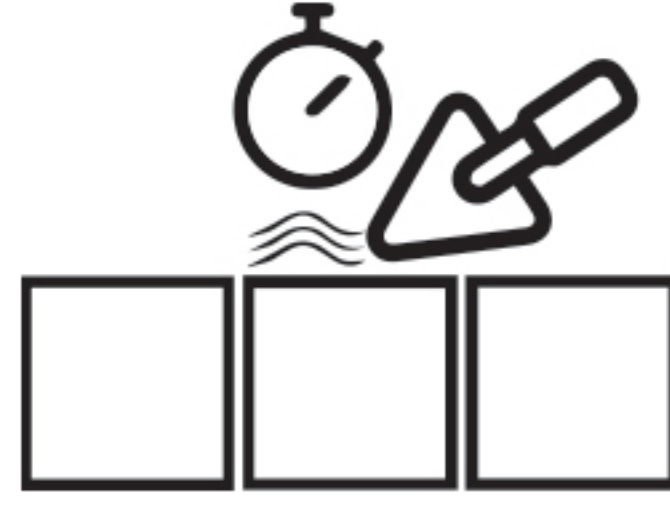
Step 5



Level with a metal bob tool and remove extra material

دھاتی آلے کی مدد سے لگائے گئے مواد کو ہموار کریں اور اضافی مواد کو صاف کریں

Step 6



Scrap the excess material within 1 – 4 hours

اضافی مواد کو 1-4 گھنٹے کے اندر صاف کریں



Scan for
Product Datasheet





Unmatched Quality Tiles

Available Across Pakistan



Website



STILE ToolBook



Catalogs



STILE Tile
Visualiser



STILE Tile
Calculator



Instagram



STILE Tile
Installation
Instructions



STILE EMPORIUM
Locations

STILE EMPORIUM

• Design Studio • Wall & Floor Tiles • Building Materials

• Karachi • Hyderabad • Sukkur • Rahim Yar Khan • Bahawalpur • D.G. Khan • Multan
• Faisalabad • Lahore • Rawalpindi • Islamabad • Wah Cantt • Peshawar

☎ +92-311-11STILE [78453] 🌐 www.stile.com.pk ✉ info@stile.com.pk
📱 /stiletilesceramic 📺 /ShabbirStile 🖨 emporium-visualiser.stile.com.pk

Copyright © 2026 Shabbir Tiles and Ceramics Limited